



Matthew G. Bevin
Governor

COMMONWEALTH OF KENTUCKY
TRANSPORTATION CABINET
Frankfort, Kentucky 40622
www.transportation.ky.gov/

Greg Thomas
Secretary

July 15, 2019

CALL NO. 206
CONTRACT ID NO. 191034
ADDENDUM # 1

Subject: MENIFEE COUNTY, 083GR19D034-FH FLAP
Letting July 26, 2019

- (1) Revised - Special Note for Excess Material Sites - Pages 17-18 of 140
- (2) Added - Excess Material Sites Maps - Pages 18(a)-18(c) of 140

Proposal revisions are available at <http://transportation.ky.gov/Construction-Procurement/>.

If you have any questions, please contact us at 502-564-3500.

Sincerely,

A handwritten signature in black ink that reads "Rachel Mills".

Rachel Mills, P.E.
Director
Division of Construction Procurement

RM:mr
Enclosures



An Equal Opportunity Employer M/F/D

**SPECIAL NOTE FOR
EXCESS MATERIAL SITES**

**MENIFEE COUNTY
RECONSTRUCTION
KY 1274
ITEM 10-372.00**

The construction activities of this project may result in a considerable amount of excess material. It is the contractor's responsibility to dispose of material in compliance with the United States Army Corps of Engineers (USACE) and Kentucky Division of Water (DOW) rules and regulations pertaining to discharges into U.S. Waters.

PART A: PERMITTED SITES

Documents and reports for environmental studies, which include historic, archeological surveys, biological assessments, etc., have been conducted by the KYTC and approved by the appropriate regulatory agencies for three excess material sites (A, B, C).

The KYTC has prepared Section 404 & 401 permits for three (A, B, & C) excess material sites that are available for the contractor to use for this KYTC project. Mitigation in-lieu fees are not required for using these sites.

The KYTC has not acquired fee simple ownership or purchased an easement to any of these excess material sites. The contractor is responsible for securing permission to place excess material at the site from the property owner(s). The KYTC has not secured access rights to the proposed excess material sites. The contractor must secure any haul roads or accesses through other properties by agreements with property owners or other governmental agencies (ie. County roads, private roads, etc.). The KYTC is not responsible for damages or repairs to sites or accesses to sites located outside of state right of way. The contractor shall notify the KYTC on the waste site(s) that will be used during construction. The contractor must notify the KYTC prior to tree clearing in the excess material sites. The location of the excess material sites and the permitted limits of each site are identified in the attached map. The following information is the property owner contact information:

Excess Material Site A:

Contact: Newton & Sandra Ross
HC 75 Box 381,
Wellington, Kentucky 40387
(606)768-6333

Excess Material Site B:

Contact: Sheila Amyx
(606)439-3640
(606)768-3672 (Business)

Excess Material Site C:

Contact: Michael Back
90 Hinton Loop
Petal MS 39455
(661)582-8623
(661)803-2043 (Cell)

It is the contractor's responsibility to review the Sections 404 & 401 permits and maintain compliance with the 401 & 404 permits throughout the duration of the project.

PART B: INFORMATION FOR ALL PERMITTED/UNPERMITTED SITES

Any work associated with the excess material site will be incidental to the excavation cost including but not limited to the following items: Erosion Control Devices, Clearing and Grubbing, Seeding and Protection, Temporary and Permanent Drainage Ditches, and Structures (including pipes, culverts, etc.).

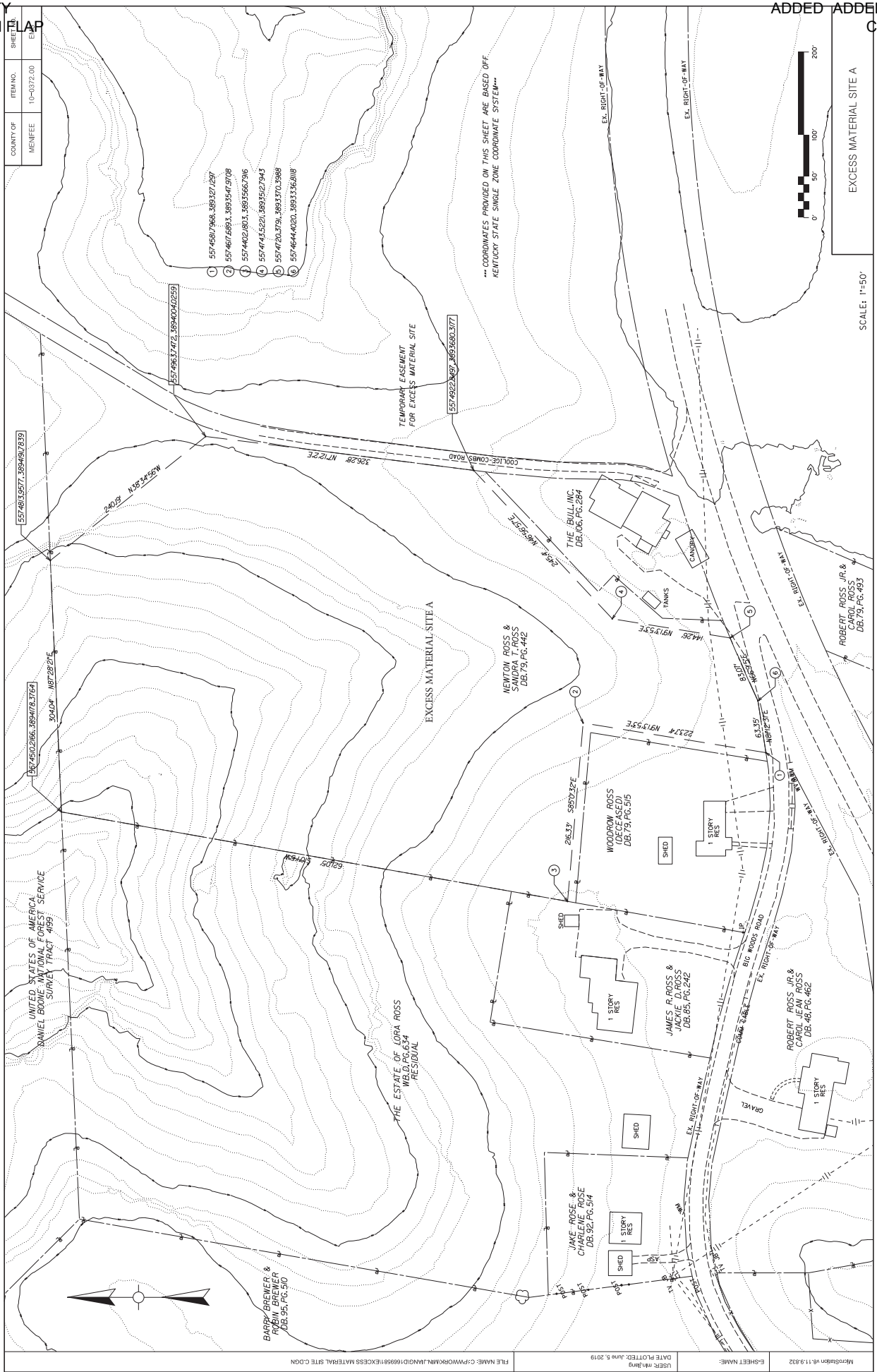
The contractor must contact the utility companies to determine if relocations of existing utilities (underground and overhead) are necessary. Costs associated with utility relocation resulting from the use of these excess material sites will be the responsibility of the contractor.

The contractor shall abide by Section 205 in the Standard Specifications for Road and Bridge Construction Manual for excess material disposal.

If the contractor chooses to use other excess material site(s) (rather than or in addition to) the KYTC's identified excess material sites, or modify the identified excess material sites, it will be the responsibility of the contractor to acquire the necessary permits and certifications. When applying for new or modified permits obtain approval from the KYTC and obtain the new permit in the Contractor's name from the USACE. If the site requires tree removal work, the contractor must coordinate with the KYTC – Environmental Analysis prior to any tree clearing at the excess material sites. The contractor shall also comply with any local ordinances. No additional contract time or payment will be allowed for this process.

Based on the clearances acquired by KYTC for the three excess material site options, KYTC will contribute up to but not to exceed \$15,927.20 into the Imperiled Bat Conservation Fund for mitigation fee required for selected excess material sites. Any excess contribution amount required is the responsibility of the contractor.

Questions concerning any potential impacts to "Waters of the United States" should be brought to the attention of the appropriate District Office for the Corps of Engineers for determination, prior to disturbance. Any fees associated with obtaining new or modified permit approvals for the disposal of excess material from the USACE or other appropriate regulatory agencies are the responsibility of the contractor.



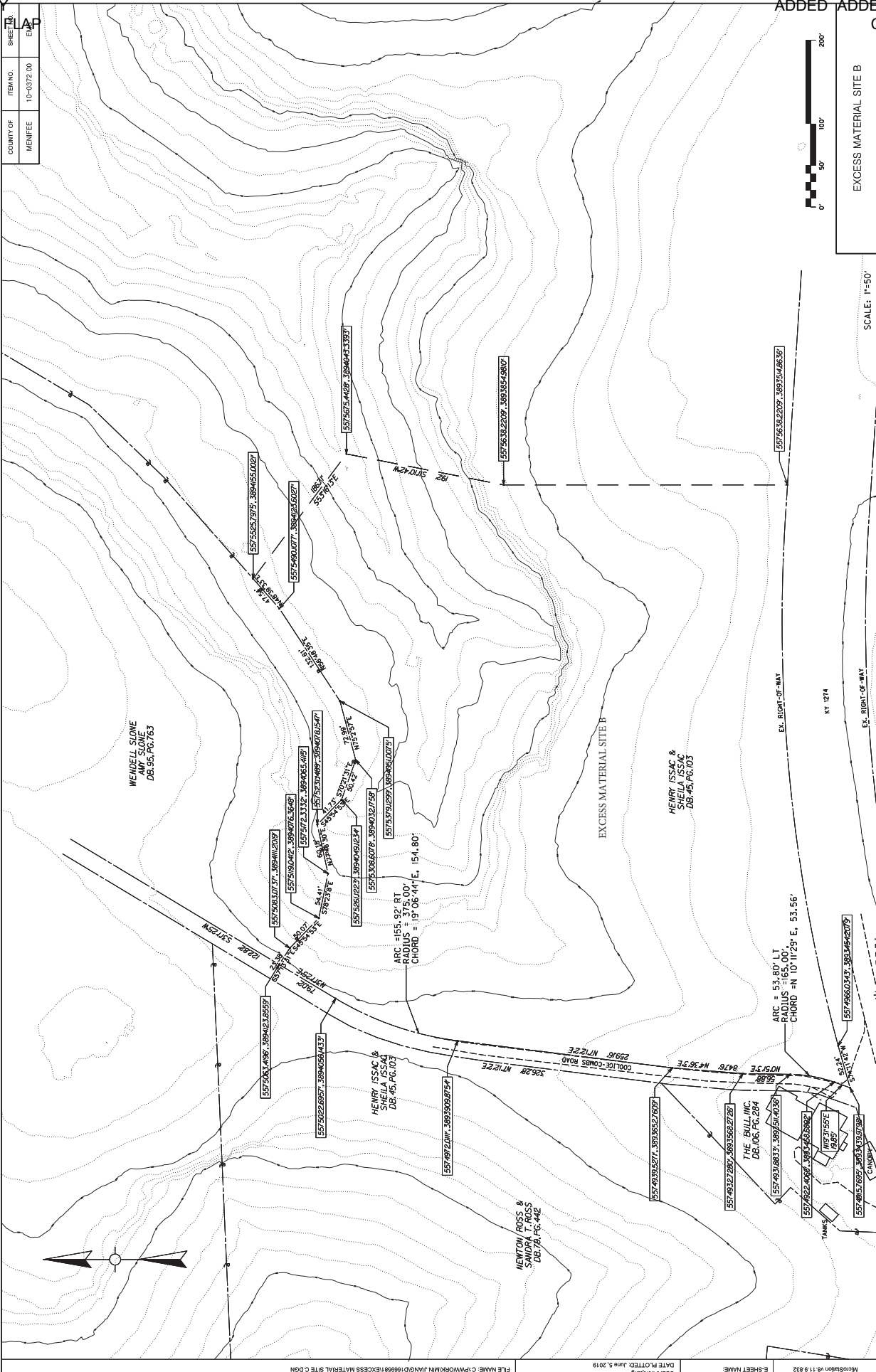
SHEET NO.	ITEM NO.	COUNTY OF
18	10-19372.00	MENIFEE



EXCESS MATERIAL SITE A
 SCALE: 1"=50'

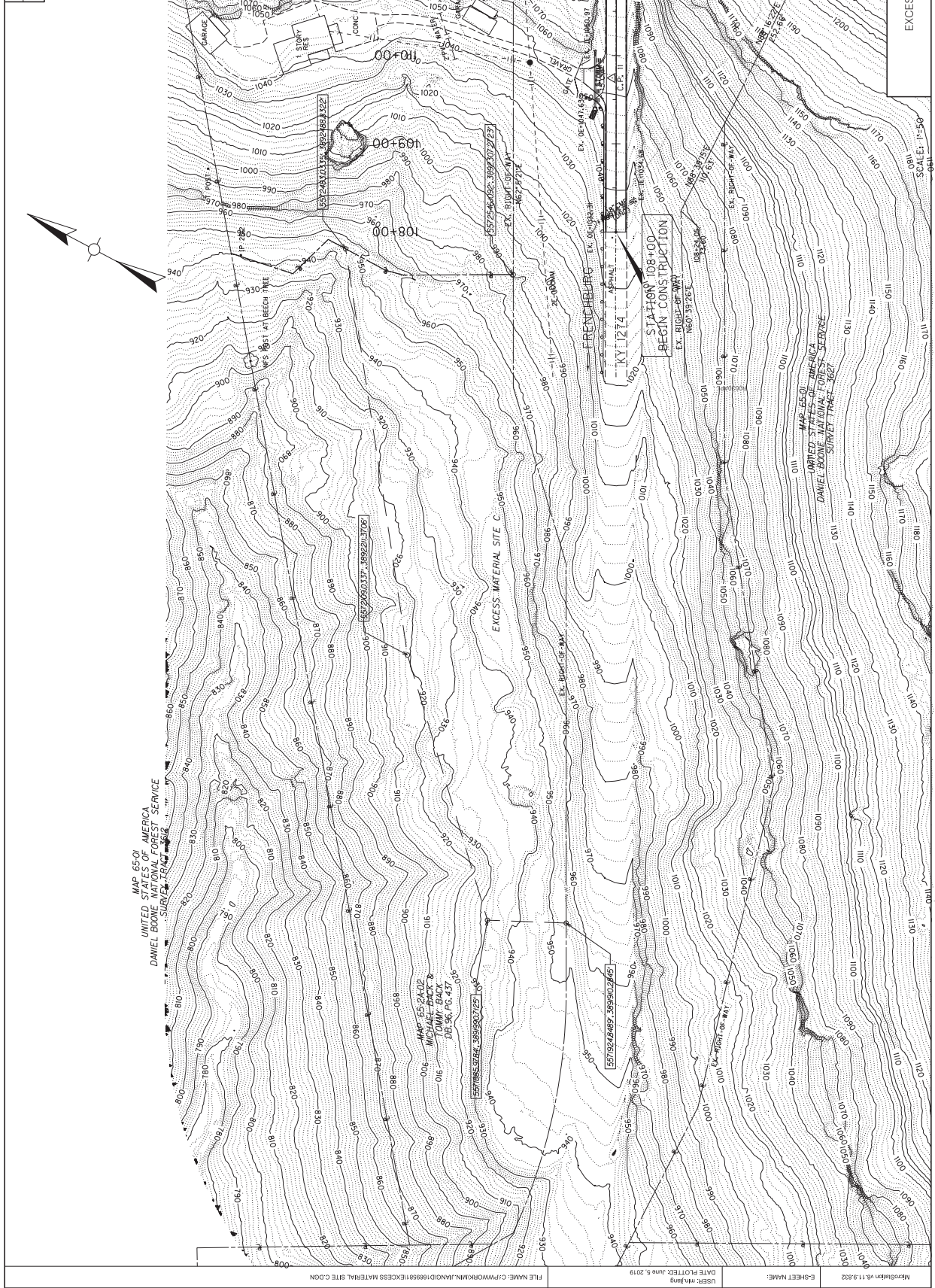
USER: mrlabing	DATE PLOTTED: June 5, 2019	FILE NAME: C:\PWORK\N\MIN\JMD\198588\EXCESS MATERIAL SITE.CDM
S-SHEET NAME:		
Mississippi #113,832		

ITEM NO.	SHEET NO.
10-0972.00	1A.P
COUNTY OF	DATE
MENIFEE	



MicroStation 11.9.832 E-SHEET NAME: USER: mrlang DATE PLOTTED: June 5, 2019 FILE NAME: C:\PWORK\MIN_JUN09\190858\EXCESS MATERIAL SITE C.DWG

COUNTY OF	MENIFEE
SHEET NO.	10-0372.00
DATE	EX-1



EXCESS MATERIAL SITE C

SCALE: 1"=50'

MISSIONSHEET #11.9.832	S-SHEET NAME:	DATE PLOTTED: June 5, 2019	USER: mrlab
FILE NAME: C:\P\WORK\MIN\JMD\0198585\EXCESS MATERIAL SITE C.DWG			